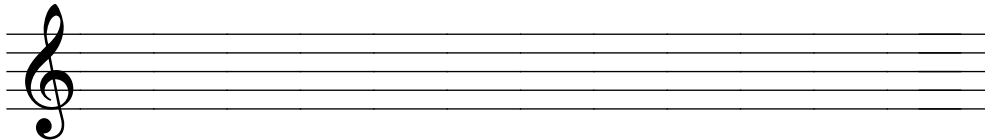


# Transposition



This is exactly the same as first grade transposition, so lets do some **very** quick revision...

Transpose this melody up into D major



What is the key of the given melody? \_\_\_\_\_

This next step is **EXTREMELY IMPORTANT**...Write the scale degree numbers in!

Now, which key do we have to transpose to? \_\_\_\_\_

Write in the new key signature, **THEN** the time signature, then draw the bar lines exactly in line with the given melody.

Now you are ready to begin!

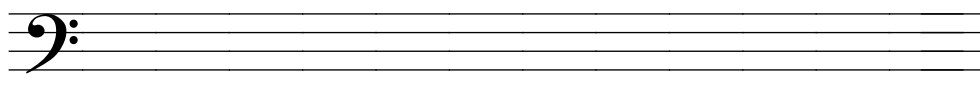
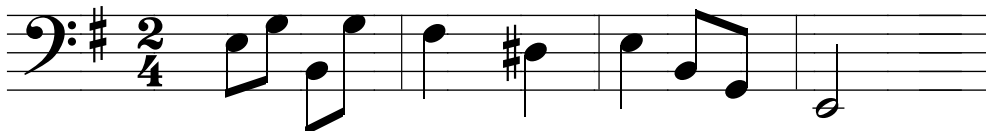
- DON'T FORGET:**
1. Check whether the question asks you to go 'up' or 'down' (this affects your starting note)
  2. Keep in line with the given melody and follow the 'shape'



The only tricky thing in Grade 2 Transposition is if you are given a minor melody with accidentals. All you have to do is remember to add accidentals to the same notes in **YOUR** melody! Try this one:

Transpose this melody down into D minor

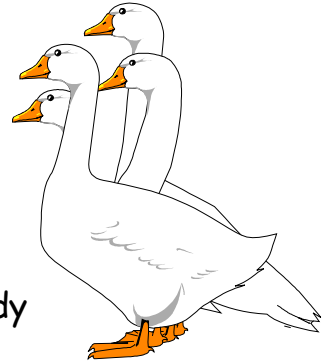
Look!  
Bass clef!



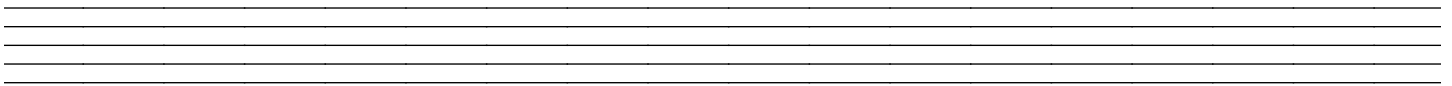
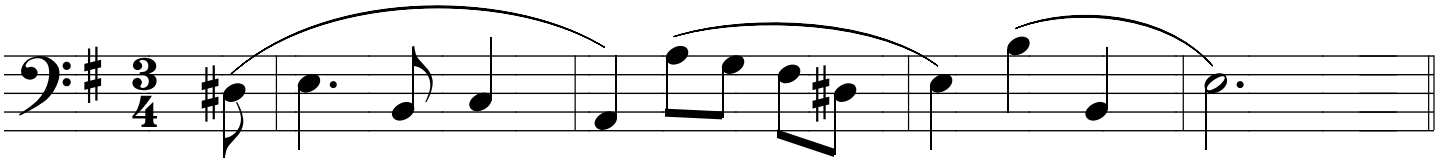
# Transposition Tips



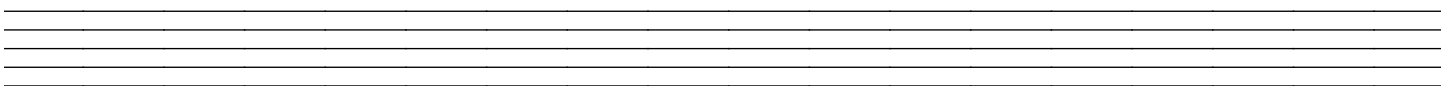
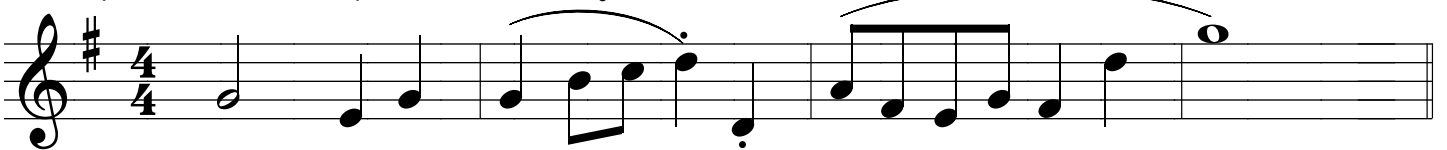
- ★ Check the original key, be careful with scale degrees
- ★ Add the new key signature
- ★ **THEN** add the time signature!
- ★ Draw the bar lines exactly in line and keep your notes in line with the given melody
- ★ Check whether you should go **UP** or **DOWN**
- ★ Follow the scale degrees, check the 'shape' as you go
- ★ Draw leger lines very neatly
- ★ Add any accidentals to the same notes as the original melody
- ★ Copy in any phrasing or other markings



Transpose this melody up to A minor



Transpose this melody down to C major



Transpose this melody up to D minor

