

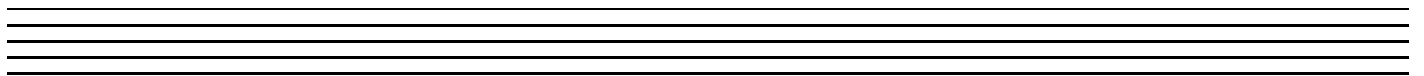
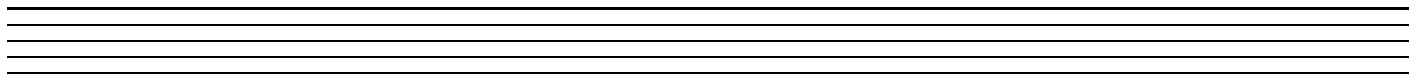
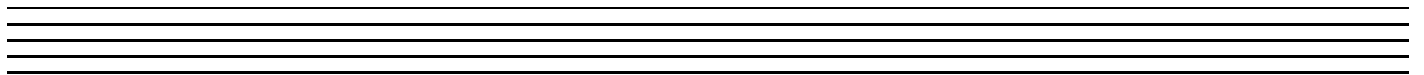
# TEST PAPER

## FOURTH GRADE THEORY

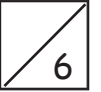
<b>Question 1</b>	<b>CREATIVE</b>	<b>Total Marks 10</b>	
-------------------	-----------------	-----------------------	--

Write a melody in B minor to the following couplet:

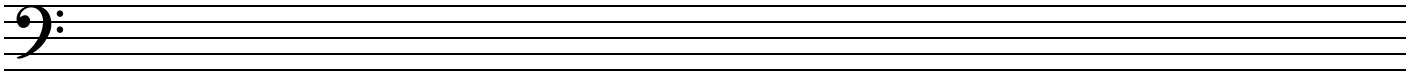
**For the most part we wept, so sad were we,  
We thought we would never again have glee.**



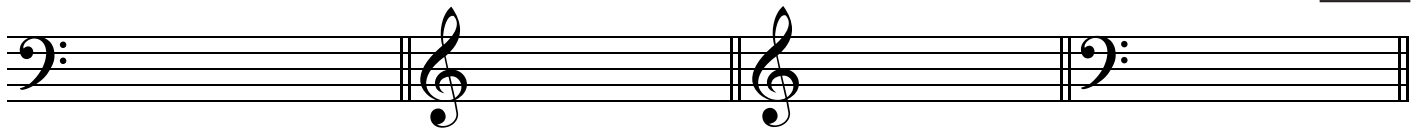
A. Write the minor scale with the key signature of four sharps



- Use a key signature
- Use minims
- Mark any intervals larger than a tone
- Write one octave going down and then up again
- Complete the scale with a double bar line



B. Write the following notes with key signatures



F minor  
leading note

G flat major  
dominant

F sharp minor  
supertonic

B major  
submediant

C. For each of these modulating melodies, name:



- The key in which it ends
- The relationship of that key to the opening key



New key: \_\_\_\_\_

Relationship to the original key: \_\_\_\_\_

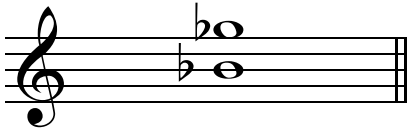


New key: \_\_\_\_\_

Relationship to the original key: \_\_\_\_\_

A. Name these intervals by number and quality

3



.....



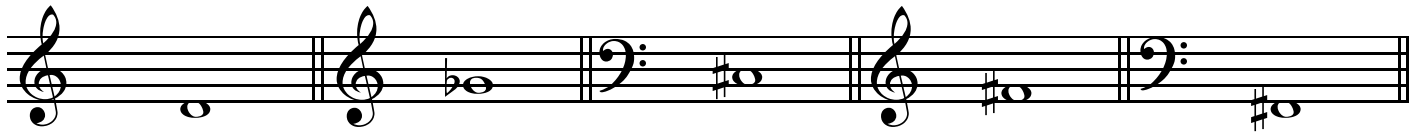
.....



.....

B. Write these intervals above the given notes

5



minor 7th

perfect 5th

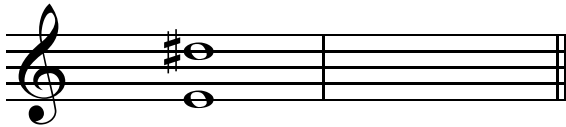
diminished 4th

minor 3rd

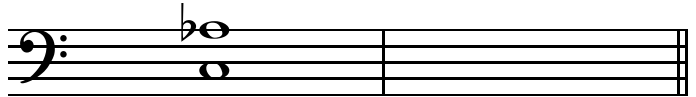
major 6th

C. Write the inversions of these intervals and name the inversions

4

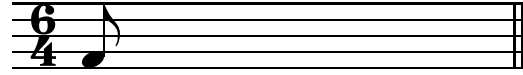
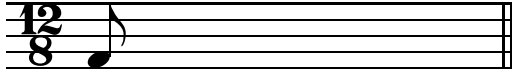
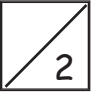


.....

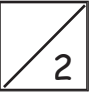


.....

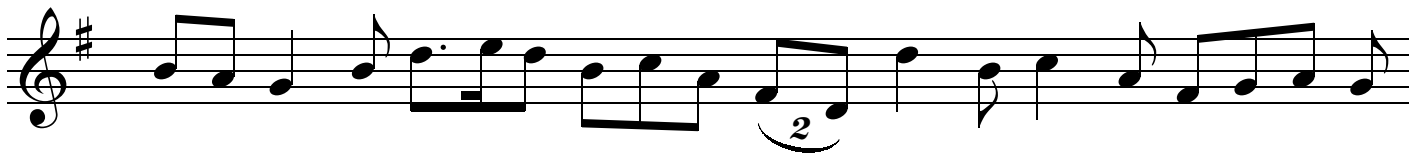
A. Complete the following bars with a rest or rests:



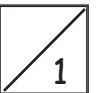
B. Insert the correct time signature to these bars



C. Add a time signature and the missing bar lines to this four bar melody



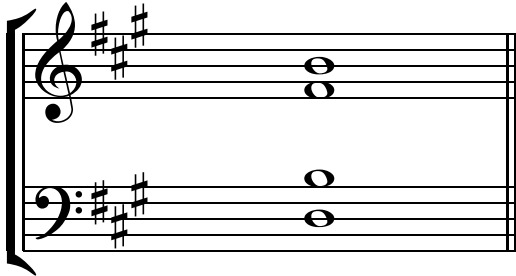
D. Name this rhythmic device



.....

A. Name the key of these subdominant chords and state the position as either root position or first inversion:

4



Key: \_\_\_\_\_

Position: \_\_\_\_\_

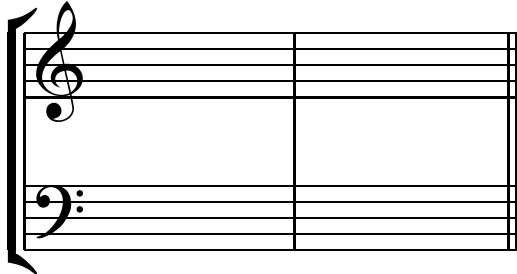


Key: \_\_\_\_\_

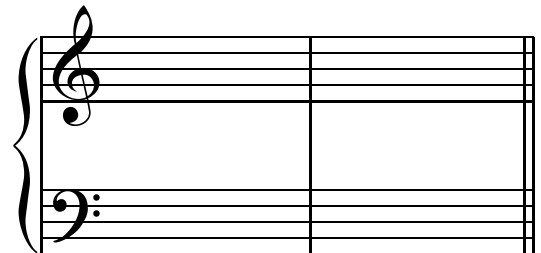
Position: \_\_\_\_\_

B. Write these cadences with key signatures

6



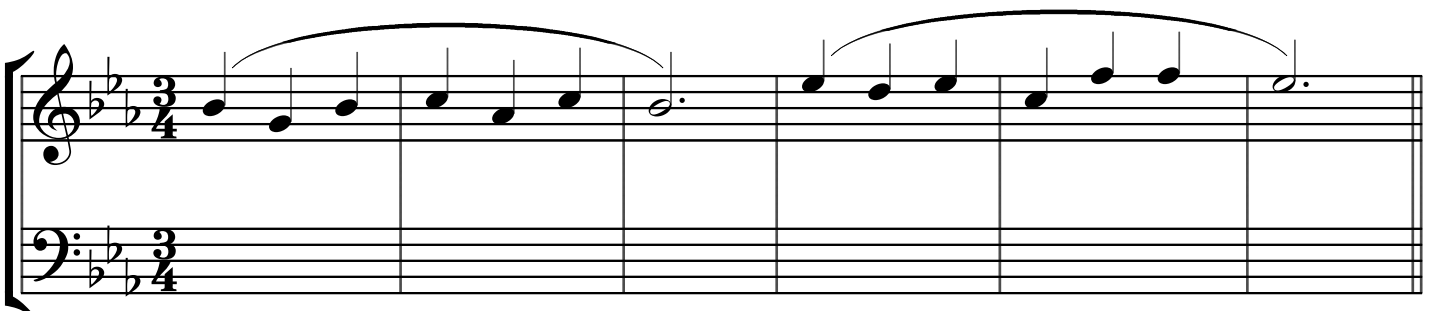
C sharp minor  
imperfect cadence  
four-part vocal style



B flat major  
plagal cadence  
four-part vocal style

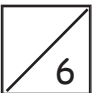
C. Harmonise the following melody in four-part vocal style. Use root position and first inversion chords.

12



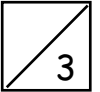
Transpose this melody down into B flat minor.

A. Give the English meaning of the following terms



- i) *tempo comodo* .....
- ii) *calando* .....
- iii) *sul ponticello* .....
- iv) *largamente* .....
- v) *dolente* .....
- vi) *l'istesso tempo* .....

B. Briefly describe the Gavotte



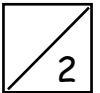
.....

.....

.....

.....

C. Write the open string tunings of the following instruments using appropriate clefs



i) cello

ii) viola

D. i) Is this semitone diatonic or chromatic?



.....

ii) Is this phrase diatonic or chromatic?

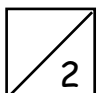
.....

iii) Name these ornaments

.....

.....

E. i) Explain the meaning of 'counterpoint'



.....

ii) Define  $\frac{9}{8}$

.....