

# TEST PAPER

## THIRD GRADE THEORY

**Question 1**

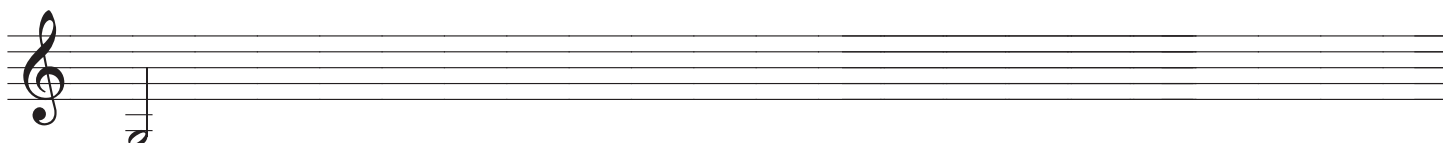
**KEYS AND SCALES**

**Total Marks 18**

A. Write the harmonic minor scale that starts on the given note

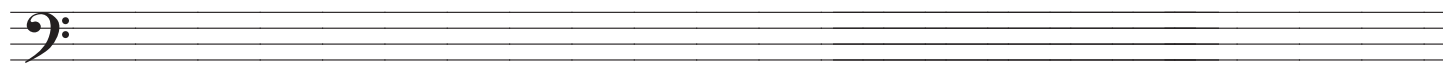


- add the key signature
- write two octaves going up
- mark the tones with a slur
- complete the scale with a double bar line

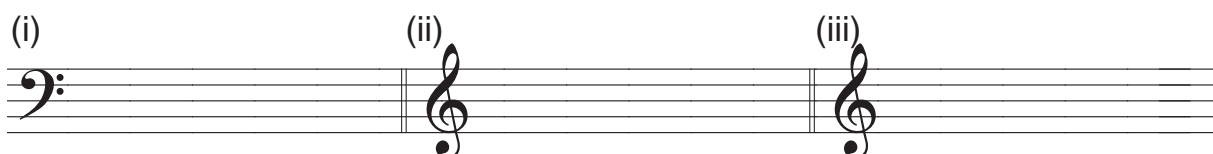


B. Write an E major scale

- use crotchets
- use accidentals
- write two octaves going down
- mark the semitones
- complete the scale with a double bar line



C. Write these notes with key signatures



C minor  
leading note

A major  
submediant

E major  
supertonic

D. Name the key of each of these melodies

2



Key .....



Key .....

**Question 2**

**INTERVALS**

**Total Marks 10**

A. Write these intervals above the given tonic notes

5

(i)	(ii)	(iii)	(iv)	(v)
Perfect 4th	Perfect 5th	Major 6th	Major 3rd	Major 7th

B. Name these intervals by number and quality

5

(i)	(ii)	(iii)	(iv)	(v)
.....	.....	.....	.....	.....

**Question 3**

**CHORDS AND CADENCES**

**Total Marks 19**

A. Write the following triads with key signatures

9

(i)	(ii)	(iii)

E flat major  
subdominant (IV)  
First inversion

G minor  
dominant (V)  
First Inversion

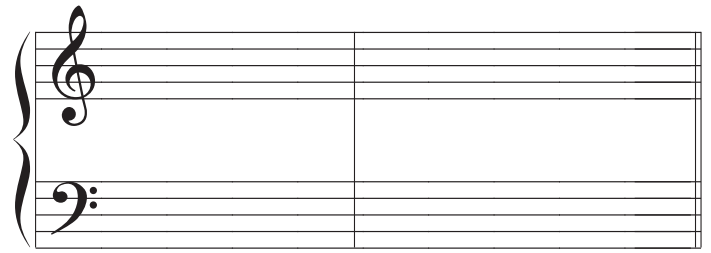
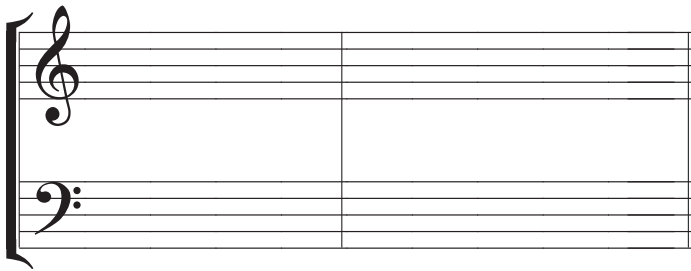
D minor  
tonic (I)  
Root position

B. Write these cadences using minims. Write the key signature

8

(i)

(ii)



C minor  
Perfect cadence  
4-part vocal style

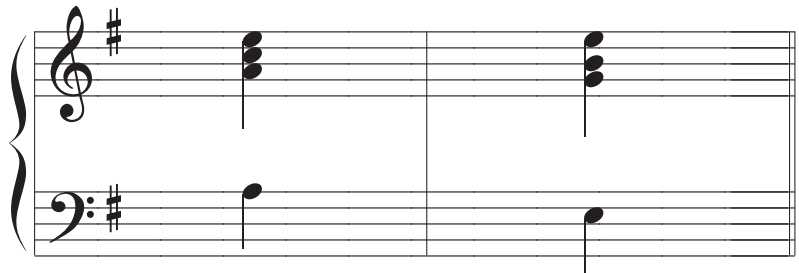
A major  
Plagal cadence  
Pianoforte style

C. Name this cadence and its key

2

Cadence .....

Key .....



Question 4

TIME AND RHYTHM

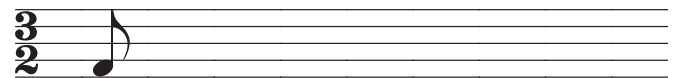
Total Marks 13

A. Complete each of these bars using rests

4

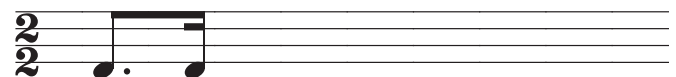
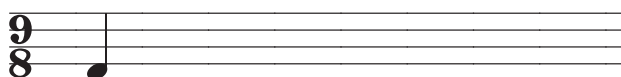
(i)

(ii)

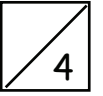


(iii)

(iv)



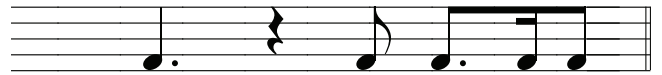
B. Add a time signature to these rhythms



(i)



(ii)



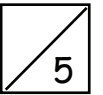
(iii)



(iv)



C. Add a time signature and bar lines to this four bar melody

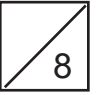


<b>Question 5</b>	<b>TRANSPOSITION</b>	<b>Total Marks 13</b>	
-------------------	----------------------	-----------------------	--

Transpose this melody down into E flat major.

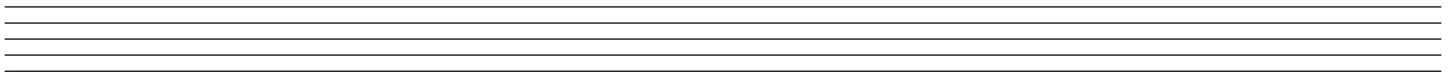
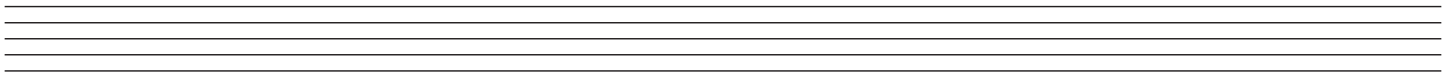
Below the staff are four empty musical staves for the student to write the transposed melody.

A. Using the time signature  $\frac{6}{8}$ , write a suitable rhythmic pattern to this couplet:

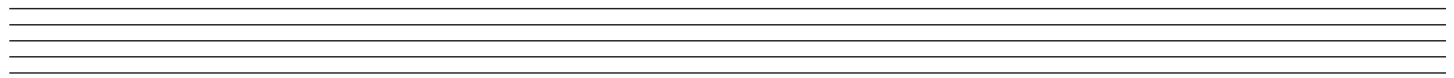
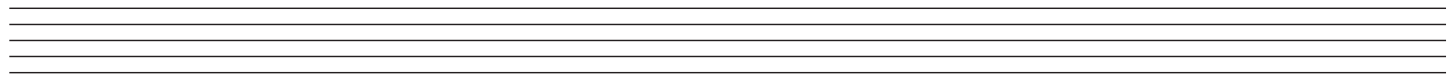
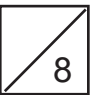


**High in the mountains a songbird flew  
Up to the sky a tall tree grew**

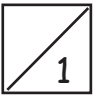
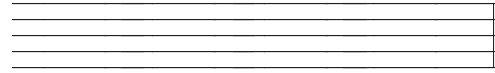
Write the words clearly under the notes. Use hyphens for words with more than one syllable.



B. Write a melody in D major using the following rhythm.



A. Write the range of the tenor voice using an appropriate clef



B. Give the English meaning of these terms

(i) *morendo* .....

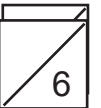
(ii) *M.G.* .....

(iii) *attaca* .....

(iv) *calando* .....



C. Study the melody below and then answer these questions



8va. ....

(i) Name the key of the melody .....

(ii) What form is this melody in? ..... Mark the main sections using A ,B, etc

(iii) Describe the time signature .....

(iv) Mark the 2 bar sequence with square brackets.

(v) Explain the sign under the last two bars .....