

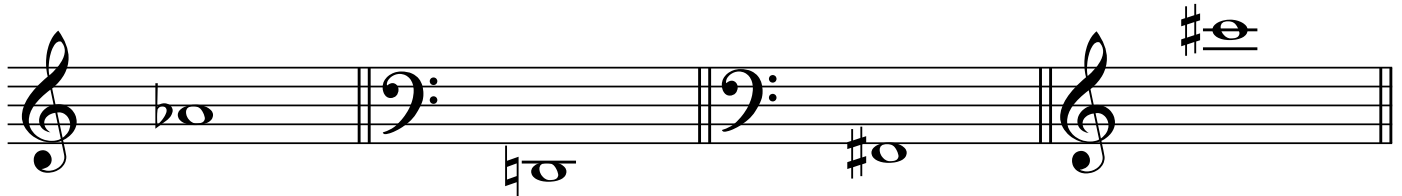
# TEST PAPER

## FIRST GRADE THEORY

**Question 1** **PITCH** **Total Marks 17**

A. Name these notes. Use words for #, b and ♯.

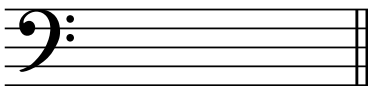
 8



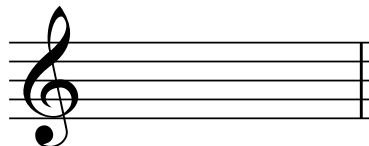
B. Write these notes.

- Use the note values specified.
- Use the signs for sharp, flat and natural

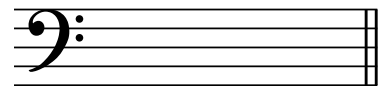
 6



E natural as a crotchet  
on a leger line



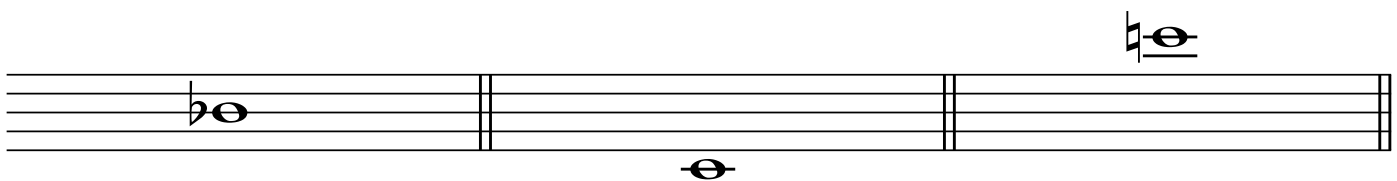
D flat as a minim  
in a space



C sharp as a semibreve  
on a line

Add the correct clef to these named notes.

 3

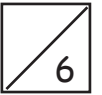


B flat

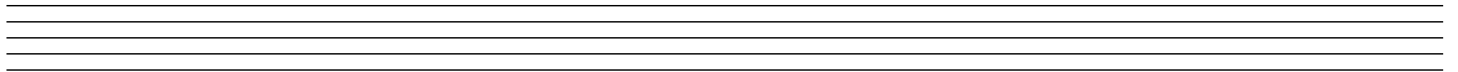
E

E natural

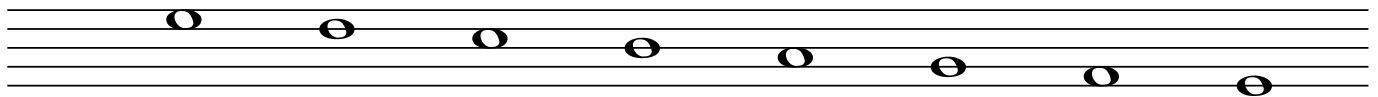
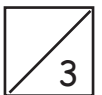
A. Write the scale of F major



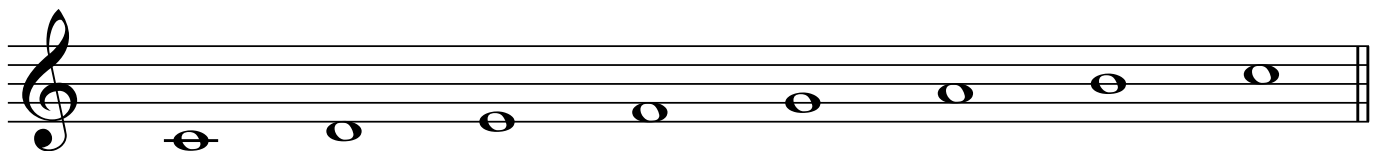
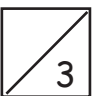
- Use the treble clef
- Use accidentals
- Write one octave descending
- Use crotchets
- Mark each tone with a slur
- Complete the scale with a double bar line



B. Add a clef and any accidentals necessary to make this the scale of G major



C. Name this scale and mark the semitones.



Name: .....

D. Write the correct scale degree numbers under the notes of this melody.



.....

|                   |                             |                       |  |
|-------------------|-----------------------------|-----------------------|--|
| <b>Question 3</b> | <b>INTERVALS AND CHORDS</b> | <b>Total Marks 15</b> |  |
|-------------------|-----------------------------|-----------------------|--|

A. Write these intervals above the given tonic notes.



7th

8ve

2nd

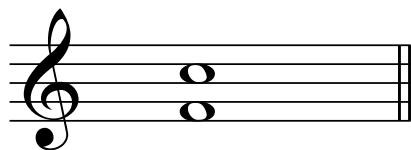
4th

B. Name these intervals by number only.



.....

C.

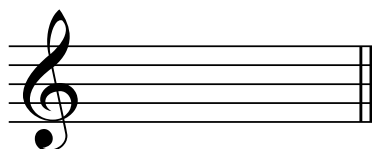


Is this interval a 4th?

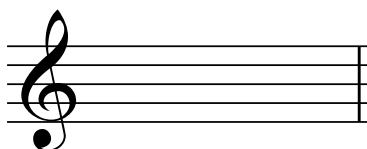
Yes or No? .....



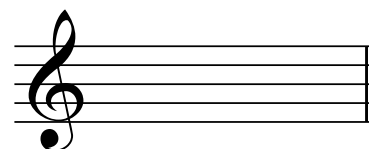
D. Write these tonic triads with their key signatures.



G major

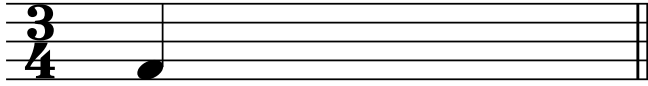
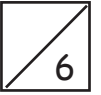


F major

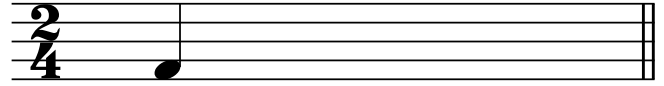


C major

A. Complete each bar as directed.



2 rests

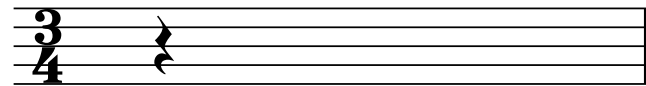
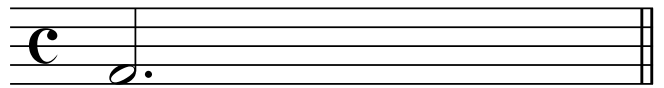
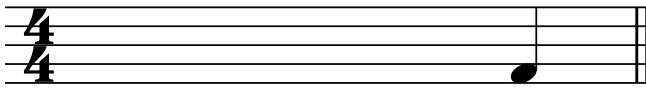


2 notes

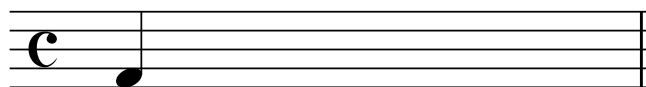
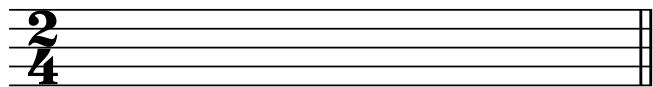


1 note 1 rest

B. Use two notes to complete each of these bars.



C. Complete the following bars using quavers correctly grouped.



D. Add the correct time signature to these rhythms

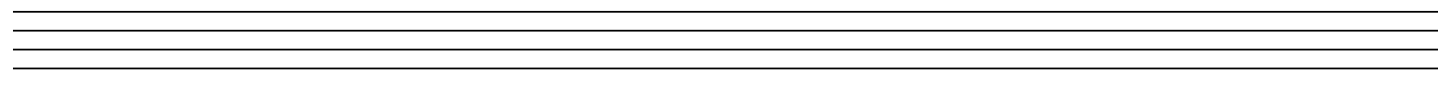


**Question 5**

**TRANSPOSITION**

**Total Marks 12**

Transpose this melody down into F major.



A. Study the melody then answer the questions below.

10

**Allegro**

- i. Name the key of the melody. ....
- ii. What is the meaning of the Italian Term at the beginning? .....
- iii. Add a sign to show the quavers in bar 3 should be played smoothly.
- iv. Add signs to show the quavers in bar 7 should be played short and detached.
- v. Explain the time signature. ....
- vi. Does this melody contain any ties? Yes or no? .....
- vii. Explain the sign under bar 7. ....
- viii. Why are there only two beats in the last bar? .....
- .....
- ix. Add a sign to show that the last bar should be played loudly.
- x. Add a sign to show the that the melody is finished.

B. Give the English meaning of the following terms or signs.





i) *ritenuto* .....

ii) *rall.* .....

iii) *moderato* .....

iv) *adagio* .....

v)  .....

vi)  .....